

The Key to Humanity's Mysterious Origins

*Does the
sacred
geometry of
Rennes-le-
Château prove
that an
advanced
civilisation
existed on
Earth in
ancient times?*

Part 1

by David Wood and
Ian Campbell © 1984-1995

Genesis Trading Co. Ltd
Wellwood, North Farm Road
High Brooms, Tunbridge Wells
Kent TN2 3DR, England, UK
Phone +44 (0)1892 544044
Fax +44 (0)1892 511301

THE MISSING LINK IN MANKIND'S EVOLUTION?

The history of humanity's emergence from the past is shrouded in mystery. Far from there being 'missing links', whole chains are absent, if indeed they were ever there. The deeper that Man searches for his beginnings, the more confusing becomes the evidence which he seeks. Those bright lights in the heavens to which he has aspired are found to be barren, airless, inhospitable wastelands, battered and cratered by violent celestial storms of 'fire and gravel'.

In recent years, many authors have suggested that an advanced intellect existed on our planet in the distant past and was cataclysmically destroyed. As plausible as their arguments have been, they have nevertheless lacked the essential proof which would force the establishment to accept them as fact. On a lesser scale, even comparatively recently, civilisations may have succumbed to heaven-sent missiles from space.

Many had hoped that the Mars mission of 1993 would have proven, with the aid of the Malin camera, the existence of an advanced culture having flourished there when Man was in his infancy. But that was not to be. Neither is that difficult and distant research necessary, for the very proof we need is here on planet Earth. To be a proof, in the true sense of the word, it would of necessity need to be permanent and verifiable by any authority which chose to examine it.

The only proof which would remain inviolable would be mathematical, and it is an indictment of our culture that we consider it in vogue to be 'innumerate'. Allow us, therefore, to prepare your minds for the ultimate revelation: proof of an advanced intelligence which preceded us—and the extent to which some have gone to preserve it and others to conceal it.

We are presently in the privileged position of witnessing the dramatic pictures of Jupiter from NASA's latest probe. We hope that the reason for naming the craft *Galileo* has not caused too much embarrassment to the Church of Rome, for it was in the year of their Lord 1616 that Galileo Galilei was warned by Cardinal Bellarmine neither to "hold nor defend" the heretical doctrine suggesting that the Sun is the centre of Earth's planetary system. As we all know, he was subsequently prosecuted for "vehement suspicion of heresy" and placed under house arrest for the rest of his life.

Johannes Kepler, being fortunate enough not to reside in Italy, escaped the full furor of the Church and went on to extemporise on Galileo's understanding of planetary movement with his discovery of the elliptical orbits of the planets with the Sun as one of the two foci. Nevertheless, in the eyes of the Church, this was an equally heretical work and was met with the full force of religious suppression.

We can only imagine how rapidly our knowledge of astronomy might have progressed had it not been for the Roman Church. Throughout the history of the 'dark ages' there must have existed some, if not many, equally brilliant minds whose contributions were successfully stifled by the Church and of whom we know nothing.

Now, with the benefit of space-age probes and the televisual medium through which pictures of celestial bodies can be brought into everyone's home, we can easily be lulled into believing that we live in enlightened times, grateful that the light is at last beginning to permeate through these dark ages. Or could it be that we are still only being fed piecemeal with a selected diet of information which has been subjected to censorship by one authority or another?

RELIGION AND SCIENCE COMPROMISE

In the last century, despotic religion was forced to form an alliance with science to avoid the head-on collision which would have been bound to result from the conflicting information which was emerging. Regrettably, most of our scientific pioneers were, for the most part, born in an era when it was considered heretical to contradict established belief, and they went to considerable lengths to accommodate the epithets of religion in their theories. In keeping with that doctrine, any embarrassing artefacts or discoveries which threatened the authorised and accepted religious status quo were overlooked.

To make matters worse, the scientific academy became equally partisan, rejecting any theory or discovery made by those who were not 'club' members. Archaeologists were dissuaded from finding anything which might rock the authorised version of Man's evolution from ape to primitive, culminating in the God-fearing creature which had been modelled in his creator's own image. The gravity-defying monuments of ancient history were explained away as pagan edifices, paid for with the blood of thousands of innocent slaves. To credit the constructors with knowledge of astronomy and mathematics—which they so obviously possessed—was heretical.

Equally heretical was the suggestion that this tranquil Earth, created by God for his chosen people, could ever be subjected to a catastrophe capable of destroying mankind. After all, how could that ever be explained away as 'God's purpose'?

One of the major facets of the combined scientific and religious suppression was highlighted in July 1994 by the impact on Jupiter of the comet Shoemaker-Levy 9. Despite the comparison by one 'authority' who likened the event to firing a baked bean at a charging rhinoceros, the violence of the encounter was awesome—as any reasonable mathematician could have predicted.

The media, unhampered by the unholy alliance between Church and academic astronomy, raised the obvious question: "What if it happened here?" Some pandered to the official line of saying, "Thanks to Jupiter, the celestial 'Hoover', it is extremely unlikely that we could ever be subjected to such an event."

They appear to have totally overlooked the fact that Jupiter has another effect, far less benign; for it is this gravitational giant which incessantly disturbs the asteroid belt and releases occasional planetoids which career towards the Sun with the capability of annihilating life on our planet if it should happen to be in the wrong place at the wrong time.

For years, evolutionists have attempted to explain away the wholesale extinction of the dinosaurs at the close of the Cretaceous period. Any theory has been acceptable, with one exception: the catastrophic impact of a celestial body. Those who proffered this suggestion were labelled "doomsday merchants". The evolutionists felt they were on safe ground by demanding, "If this were ever the case, then show us the crater," feeling confident that, after 63 million years, the erosive climate of the Earth would have obscured any evidence of it.

Once again, scientific discovery has upset the 'benevolent God' theory, and the very site of the impact in the Yucatan peninsula in

Mexico has now been identified. Furthermore, the resultant kinetic energy released by what is now known to have been a 10-kilometre-diameter body was more than sufficient to have extinguished many life-forms on the planet virtually instantaneously. The survivors of the impact would have inevitably succumbed in the ensuing 'nuclear winter'.

Since the announcement in distinguished periodicals in 1993 of the confirmation of the Yucatan impact site, the 'cat' has been let out of its proverbial 'bag' and the threat posed by thousands of Earth-crossing asteroids and comets has at last been realised. Already, a growing number of them have been identified.

Indeed, the close passage of the IRAS-Alcock-Iraki comet in 1983, which was only noticed at the last minute (in astronomical terms), is now known to have been one of the principal reasons behind the Americans setting up Spacewatch, and the inevitable necessity of Spaceguard. The President of the United States has instructed these new organisations to document fully every Earth-crossing body by the end of this millennium.

Even so, the potentially incoming comets from the Oort Cloud could never be so catalogued, and, in the opinion of Messrs

Victor Clube (Head of Astrophysics at Oxford) and Bill Napier (Astronomer at the Royal Observatory at Edinburgh), there is a mathematical certainty of a cometary close-passage or impact within the foreseeable astronomical future. They, like so many other authors who have been ignored in the past, suggest that the Earth has been subjected to periodic, catastrophic destruction several times in its history and will continue to be so threatened.

With the confidence of not being burned at the stake, other investigators are now claiming that there is ample evidence to suggest the presence

of celestially promoted disasters in more recent times, and satellite photography of the Earth's surface has done a good deal to confirm it.

The resurrection of myths and legends suggests that these may have been based on actual events and that the stories of destruction of civilisations by fire and by flood may be more literal than many would care to think.

"LUCY" VERSUS MICROBIOLOGY

Within these proven scenarios of violence we are expected to believe that from the Eocene Age a hominid biped developed from an ape-like, tree-dwelling creature into modern Man. The palaeoanthropological academy produces hero after hero clutching yet another minor bone from some creature's foot or knee, claiming that he has found the 'missing link'. Within 24 hours, newspapers around the world miraculously reconstitute the whole of the skeleton and form of the creature from these minor discoveries. Thereby, millions of people are once more inveigled into believing yet another piece of scientific disinformation.

There is, however, a glaring oversight in their assumptions. To produce "Lucy's" very attractive kneebone and claim that this lady was our walking ancestor of three million years ago, rather overlooks one essential ingredient of the creature: her brain capacity. Even with a modicum of knowledge on these matters, the development of her brain from some 500 cc, at best, to the

Allow us, therefore, to prepare your minds for the ultimate revelation: proof of an advanced intelligence which preceded us, and the extent to which some have gone to preserve it and others to conceal it.

massive 1,400-plus cc of *Homo sapiens* would require possibly 100 times more than the three-million-year period of her existence. Furthermore, the Earth would be littered with the remains of all the intermediary hominids as the brain capacity painfully increased by fractions over many millions of years.

It is indeed unfortunate for the trowel-carrying palaeoanthropologists that another, far more reliable branch of science has gone on record as claiming that the original "Eve" of our species can be genetically traced to having existed only since 200,000 years ago. The evidence for the claim is based on a thorough analysis of the mitochondrial DNA in the placental tissue of women from various races around the world:

"Scientists at the University of California at Berkeley, led by Dr Alan C. Wilson, support the view that modern man, *Homo sapiens*, originated in Africa about 200,000 years ago and later spread throughout the rest of the world."

(Source: *The New York Times*, 26 March 1986)

This investigation resulted from studying a known rate of mutation in a gene which is exclusively female. The figure was subsequently confirmed by several independent investigators. Their only disagreement was over the number of original "Eves" necessary to have given enough genetic variation for the species to have survived. According to the experts, there would have needed to have been a colony of at least 600, but no more than 10,000 females.

Additionally, during the writing of this article, a similar investigation into the male-only "Y" chromosome has, according to Dr Michael Hammer of Arizona University, concluded that:

"Adam lived in Africa 188,000 years ago."

(Source: *The Times* [London], 24 November 1995)

With two branches of science in such direct conflict, the inevitable question arises as to which one is correct.

Both the Church and the evolutionists are now faced with such overwhelming evidence that they would need an alchemist's ability to change black into white if they are to escape the logical conclusion.

In view of these findings, how can we possibly deny that Man must have been the result of genetic engineering by an advanced progenitor? The diehards will still of course insist that this occurred by the hand of God, whom they have never doubted to be anything but the Father of Mankind. But here, even archaeology does them a disservice, for there is an ever-mounting accumulation of evidence to show that the original 'deity' was female.

Even an elementary analysis of our thought processes contradicts the idea of linear evolution in Man. While still possessing the animal instincts of sex, survival and territorial imperative, we are, nevertheless, appreciative of the Arts and the beauty of nature—things of which the animal kingdom is totally unaware.

It is considered a physiological fact that members of the animal

kingdom use the entirety of their brains to function and survive. But Man is endowed with a brain whose capacity far exceeds his present needs—one more clear contradiction to linear evolution whereby a given physical development occurs only by virtue of necessity. Additionally, the head of *Homo sapiens* is quite disproportionate to his body and, being subjected to the high gravitational field of planet Earth, it is largely responsible for the physiological stress placed upon his heart, back, neck and legs.

If 'Big-head' is the result of either God's design or evolution, then on either count it would seem to be a failure. If, on the other hand, an indigenous 500-cc hominid had been genetically engineered and had its brain capacity increased, there would also have been the necessity for it to be protected with the oversized and weighty skull with which we are so handicapped.

Again, an inevitable question arises. For what reason would this have been done? We can only surmise that it was either for the high-principled objective of accelerating the intellect of the most suitable creature on the planet for its own sake, or that we were engineered to be intelligent enough to carry out the instructions of our masters. In either case, the handicap of an overweighted head would have been of secondary importance to the main objective of the perpetrators.

All the evidence suggests that a planet with a lower gravitational field would have been advantageous to the health and efficiency of *Homo sapiens*. We cannot help but wonder whether the Olympic records provide the very evidence we need to realise that, in our present form, we are not indigenous to planet Earth. If we had evolved here, should we now not be confronted with records which have stabilised? It would be understandable and natural for our athletes to be striving to improve upon a record that was set, say, 50 years ago. Contrary to this, however, all the records involving a gravitational factor are progressively improving year by year—something indicative of a creature adapting itself to an alien environment.

Could it be that we are the optimum design for a creature tailored to the lower gravitational field of a planet such as Mars? The large brain and weighty skull essential to a high intellect may of necessity need to live in a gravitational field much lower than that of planet Earth, where the mechanical heart pump would be under considerably less strain and the creature would live far longer, thereby extending its learning and inventive capacity. If this were so, our options may have been limited to Mars and our Moon—both of which, being devoid of atmosphere, were unsuitable.

THE MARTIAN CONNECTION

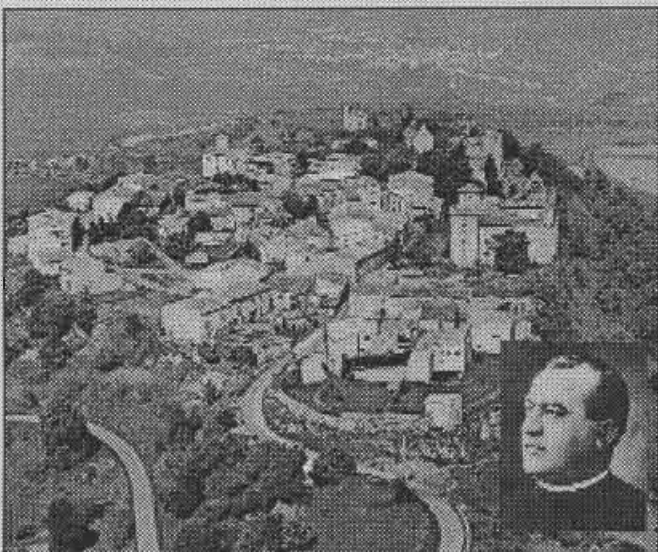
In the case of Mars, however, this was not always so. Readers of NEXUS will need no introduction to what has come to be referred to as the "Martian enigma"—a rock formation in the Cydonia region which bears too many resemblances to a human face to be dismissed as pure chance.

In view of these findings, how can we possibly deny that Man must have been the result of genetic engineering by an advanced progenitor?

A SHORT HISTORY OF RENNES-LE-CHATEAU

Some 40 kilometres south of Carcassonne is the tiny, mountaintop village of Rennes-le-Château. Supposedly it was once the city of Rhedae, a stronghold of the Visigoths in an area now known as the Razès. Then, it boasted a population of some 30,000, but today this tumble-down hamlet houses no more than a couple of hundred people. History had passed it by until recently, but now it is a tourist attraction and the subject of a considerable number of books. The main theme is centred around the possibility that a great treasure was found there and that others have yet to be discovered.

The area certainly has a colourful and violent history. Romans, Visigoths, Cathars and Knights Templar, all with associations of lost treasure, contribute to its intriguing past.



Rennes-le-Château, village of mystery and the domain of the priest, Bérenger Saunière (inset).

More recently, in 1885, a certain priest, Bérenger Saunière, was appointed to the church of Rennes-le-Château (see photo above). At that time, the 800-year-old building was badly in need of extensive restoration, but the impoverished priest was without funds to achieve this. Eventually, in 1891, a small loan was arranged.

During the subsequent process of restoration, one of the supporting stones of the altar was moved. It is said that it was hollow and inside were found documents, genealogical charts and Latin texts embodying such complex codes that it is perhaps surprising they were ever deciphered. However, the key to their solution was eventually found on a gravestone in the churchyard of Rennes-le-Château. When the decoding was completed, the solution, although in plain language, was still apparently meaningless. It was in French and it read:

**BERGERE PAS DE TENTATION QUE
POUSSIN TENIERS GARDENT LA CLEF
PAX DCLXXXI PAR LA CROIX ET CE CHEVAL
DE DIEU J'ACHEVE
CE DAEMON DE GARDIEN A MIDI
POMMES BLEUES**

Translated into English, it read:

**SHEPHERDESS, NO TEMPTATION, THAT
POUSSIN, TENIERS, HOLD THE KEY; PEACE 681.
BY THE CROSS AND THIS HORSE OF GOD,
I COMPLETE [or DESTROY]
THIS DAEMON OF THE GUARDIAN AT NOON.
BLUE APPLES.**

Such, apparently, was the importance of the discoveries that Saunière was sent to Paris with the blessing of the Bishop of Carcassonne, in whom he had confided. The precise purpose of this mission remains in considerable doubt, but, while in Paris, Saunière visited the Louvre where he allegedly acquired copies of three paintings. The significance of one of these, in particular, became clear as our investigation progressed.

It would appear that, on his return to Rennes-le-Château, Saunière became fabulously rich, although the source of his wealth is far from proven. It is a matter of record, however, that he lived a life of opulence and spent a large sum of money on the restoration of the church. In doing so, he filled it with controversial imagery, seemingly designed to desecrate the very faith which he represented.

Considering the reference to Poussin in the hidden parchment and the fact that one of the three paintings that the curé Saunière had brought back to Rennes-le-Château was Nicolas Poussin's famous work, *Les Bergers d'Arcadie* (The Shepherds of Arcadia), Poussin was an obvious target for investigation.

The significance of the painting was heightened when it transpired that this work had been acquired by none other than the King of France, Louis XIV, whose interest was no doubt precipitated by a strange letter which his Superintendent of Finances, Nicolas Fouquet, received from his brother, the Abbé Louis Fouquet, after the latter had met with Poussin in Rome.

In part, the letter read:

He and I discussed certain things, which I shall with ease be able to explain to you in detail—things which will give you, through Monsieur Poussin, advantages which even kings would have great pains to draw from him, and which, according to him, it is possible that nobody else will ever rediscover in the centuries to come. And what is more, these are things so difficult to discover that nothing now on this Earth can prove of better fortune nor be their equal.

Here one is immediately alerted to the possibility of something far more profound than common gold. Indeed, Poussin was eventually to be a key player in the mystery, and his works, particularly *Les Bergers d'Arcadie*, were found to contain sufficient evidence to prove that he was fully informed of the advanced landscape geometry contained in the area. Furthermore, it was obvious that he considered it to be of such great importance that it had to remain coded to protect it from those who would wish to see it erased.

A detailed analysis of Poussin's paintings is given in our book, *Geneset*, but, even so, a vital clue was overlooked and it became necessary to publish *Poussin's Secret*, where the full brilliance of his work is finally revealed.

To this mystery must be added the remarkable but fortuitous failures of both of the recent Russian and American probes—failures to which neither of these space agencies is accustomed.

We should remember that it is generally considered that, in the not-too-distant past, Mars was indeed blessed with a maritime climate capable of supporting life-forms similar to ourselves.

Furthermore, it is considered a matter of record that, had that planet and Earth been subjected to a celestial catastrophe of the type previously mentioned, Earth, being closer to the Sun, would have recovered by virtue of the mechanics of convection.

Mars, on the other hand, may have been less fortunate. The aftermath of titanic impacts by comets or asteroids would have been that billions of tonnes of dust was projected high into the atmosphere, thereby effectively masking the planet from the incoming rays of the Sun. The inevitable result would have been what we now refer to as a "nuclear winter"—something from which Mars may never have recovered.

Would it not be unreasonable to speculate on the possibility of a highly evolved intelligence having once inhabited the red planet and becoming sufficiently advanced to have journeyed to Earth, possibly using the Moon as a staging post? The attractive wealth of minerals could have been the reason for their expeditions, but the gravitational field of Earth may well have been too oppressive for them to function efficiently.

What simpler solution could there have been but to genetically-engineer a suitable indigenous hominid to a level of intellect capable of carrying out their instructions?

And could this have occurred 200,000 years ago—the very time when we consider Mars to have been a habitable planet and, furthermore, the very date which our microbiologists have now determined to be the time when our species came into being?

THE FRENCH CONNECTION

We now jump to the Languedoc region of south-west France, which has become known as a treasure-hunter's paradise.

Our interest, however, lies not in common gold but in something far more profound—and, obviously, something which many would prefer to remain hidden. Were it not for the sudden rise to riches of a local priest or the interest shown in the area by the Third Reich, what has become known as the riddle or mystery of Rennes-le-Château (see History box, page 34) would not be considered a threat.

Nevertheless, we will now present sufficient evidence to convince any open-minded person that a form of landscape geometry exists at Rennes-le-Château which embodies unique geometric figures, unique use of transcendental ratios and, above all, a method of relating linear and angular measure never previously employed in academic mathematics. Surely this use of such profound mathematical knowledge implies a level of intelligence far greater than that allowed for our ancient ancestors.

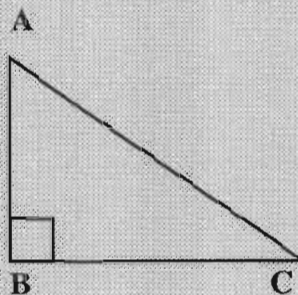
THE INEVITABILITY OF MATHEMATICS

It is unfortunate that many shy away at the mere mention of mathematics and, in view of the way many schools teach the subject, to some degree we feel bound to sympathise. In the case of the geometry of Rennes-le-Château, however, one requires only a limited knowledge of elementary trigonometry to qualify for entry into, and an understanding of, how miraculous the design really is.

TRIGONOMETRIC TOOLS

It is a fact that in any right-angled triangle (i.e., one containing a 90-degree angle), by knowing the lengths of any two sides, or the length of one side and one of the acute angles, all the other angles and sides may be found. This is achieved by three sets of tables, the sines, cosines and tangents, wherein the respective ratios of the angles have been precalculated. The formulae are as follows:

$$\text{Sine} = \frac{\text{Opp.Side}}{\text{Hypotenuse}} \quad \text{Cosine} = \frac{\text{Adjacent Side}}{\text{Hypotenuse}} \quad \text{Tangent} = \frac{\text{Opp.Side}}{\text{Adjacent}}$$



The Hypotenuse is, of course, the side opposite to the 90-degree right angle and is always the longest side. For example, in the diagram, Sine A = BC/CA or Sine C = AB/CA. Modern scientific calculators have replaced the bulky tables and greatly accelerated the use of trigonometry.

Pi (π), 3.1416, is the ratio which allows us to solve the measure of circles, in that by multiplying the diameter of a circle by *pi* we find the length of the circumference.

Phi (ϕ), 1.618033989, is the famous Golden Mean of antiquity and this ratio can be guaranteed to exist in all the ancient monuments which display sacred geometry. It is best understood by the fact that if a line is divided in such a way that the ratio between the smaller and larger portion is the same as the larger is to the complete length, we have achieved the Golden Division.

The Golden Mean

For example:



where

$$\frac{AC}{CB} = \frac{CB}{AB} \quad \text{or} \quad AC \times AB = CB^2$$

Also, *phi* behaves in a rather unique manner, in so much as when squared it becomes the same number increased by unity ($1.618033989^2 = 2.618033989$), and when divided into unity (i.e., the reciprocal) it is the same number decreased by unity (1 divided by $1.618033989 = 0.618033989$).

The simplest way to achieve *phi* is by evaluating:

$$\frac{\sqrt{5}+1}{2} = 1.618033989 \quad \text{or} \quad \frac{\sqrt{5}-1}{2} = 0.618033989$$

It is our duty, therefore, to equip readers with a few elementary mathematical tools with which to enhance their appreciation of the discovery. Those who require this instruction should now refer to the box on page 35, entitled "Trigonometric Tools".

We shall continue with those who are sufficiently aware of trigonometric ratios to follow the argument, but, before doing so, a few reminders would not go amiss.

The Pythagorean properties of the right-angled triangle are well-known to us, the 3, 4, 5 version being the whole integer role-model. Obviously, any multiple of it is equally valid, but by doubling those values we achieve the unique situation whereby the sine values of the angles of the triangle—0.6, 0.8 and 1.0—numerically equate to their opposing linear sides of 6, 8 and 10, albeit with adjustment to the decimal place. The relevant numbers are, therefore, **6, 8 and 1**, and their significance will increase considerably as we proceed. We would also do well to remember that this situation is valid regardless of which unit of measure is used.

Without wishing to labour the point, we could now consider an alternative use for a trigonometric ratio, far removed from that for which it was designed. Let us suppose we are confronted with selecting the combination for a safe or a computer entry code. We could choose, say, 139173101—a difficult number to remember and not one you would wish to record in your Filofax for obvious reasons.

We would need to do no more, however, than remember the number 8, for by selecting the sine value of 8 degrees on any scientific calculator, the required code number would be displayed. In effect, we are using the calculator to transpose or translate a mathematical value to a simple angular integer.

Here, then, is the basis of one of the unique mathematical languages which was used extensively by the designers of the

Rennes-le-Château geometry. What are apparently nondescript distances between geometric intersections and historic markers suddenly become significant when it is realised they are sine values, and, by reading their inverse, they become recognisable. Furthermore, on some occasions, when translated into their angular values, they can also convey an identifying signature—something we will deal with in more detail later. ∞

Continued in the next edition of NEXUS...

This article, *The Key to Humanity's Mysterious Origins*, is based on material from the books *Genesis*, *Geneset* and *Poussin's Secret*, which are distributed by Genesis Trading Co. Ltd, Wellwood, North Farm Road, High Brooms, Tunbridge Wells, Kent TN2 3DR, England, UK; telephone +44 01892 544044, fax +44 01892 511301.

About the Authors:

David Wood is qualified in the fields of trigonometrical and topographical surveying and cartographical reproduction. This unusual combination of skills, together with his study of legends, permitted him to discover an ancient geometry concealed in the valley of Rennes-le-Château. After years of refinement, his observations and calculations have been proven correct.

Ian Campbell is an investigative journalist, author and photographer who has been examining the geometric and historic aspects of the Rennes-le-Château mystery since 1982. He independently verified David Wood's early research before joining him in the culmination of his studies, revealing the awesome secret of Rennes-le-Château.